

Model MSX600

Xray Inspection Ssystem



Ver 21-0801

MSC M.S. Engineering Co.,Ltd.
<http://www.mseng.co.jp>
TOKYO JAPAN

1. Feature

MSX600 is with space-saving type X ray inspection system, and the purpose of use is the internal inspection of electronic components, such as BGA, CSP.

(1) The newest mini focus X rays generator

A clear fluoroscopy image can be got with the minute focal spot size of 100 micrometers. And it can supply at a very reasonable price.

(2) Angle Fluoroscopy

0-50-degree angle fluoroscopy is also possible.

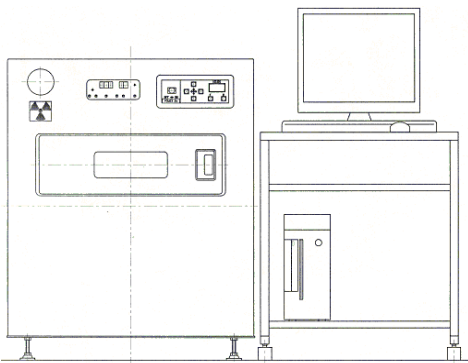
(3) The digital image detector of high resolution

It has 2,300,000-pixel image converter. Therefore, An image is clear.

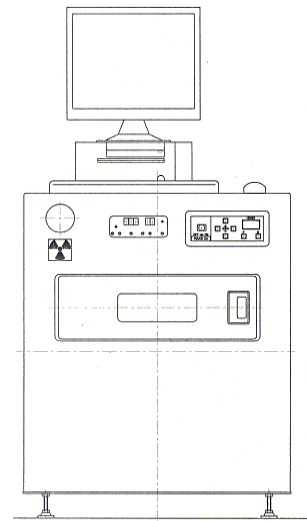
(4) Compact size and easy to operation.

Since the size of equipment is 74Wx92.5Hx70D cm, it can be used also on a work desk.

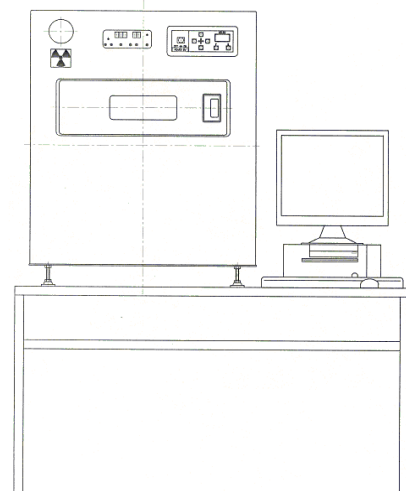
① On the floor



② On the floor



③ On the Desk



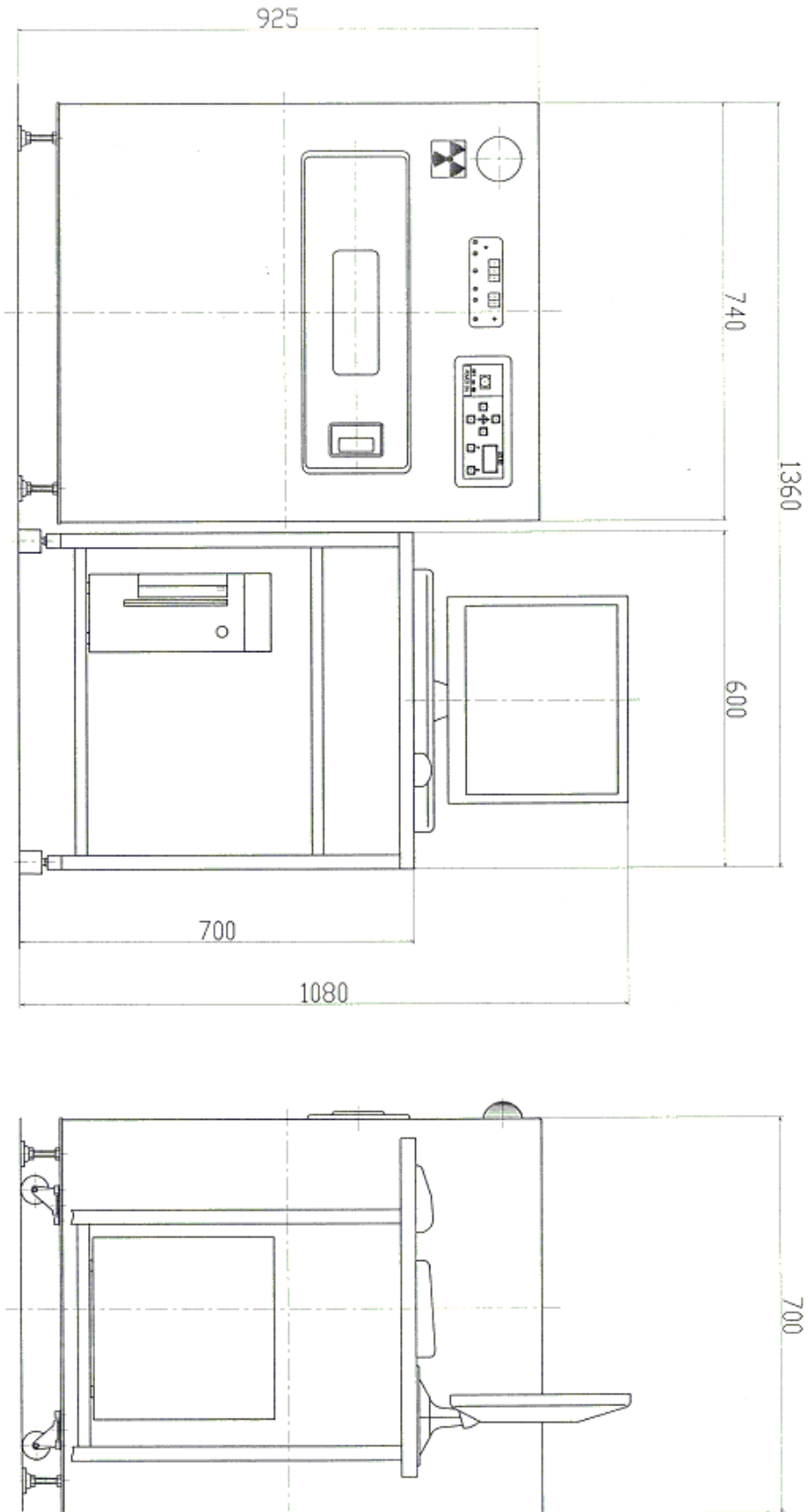
2. Main Specifications,

型 式 Type		MSX600-(L)	MSX600	
X線源 X-ray source	最大管電圧 Max. tube voltage	100kV		
	最大管電流 Max. tube current	300 μ A		
	焦点寸法 Focus size	100 μ m		
	最大出力 Maximum output	27W		
	X線管方式 X-ray tube type	密閉式 Closed type		
検出器 Detector	X線CMOSカメラ X-ray CMOS camera	16V x 22H mm 230万画素 16V x 22H mm 2,300,000 pixel		
モニタ Monitor	画面サイズ Image size	17in LCD		
PC環境 environment	CPU	Intel Core i3-6100 (3.7GHz 2C/4T L3:3MB)		
	メモリ Memory	4GB DDR4 SDRAM		
	ストレージ Storage	3.5" HDD 1TB SATA		
	OS	Windows 10 IoT EnterPrise 2019LTSC 32bit		
	画像処理 Image processing software	Image improvement software		
本 体 Main body	装置寸法 Dimensions	740W × 925H(本体) × 700Dmm		
	装置重量 Weight	約160kg Approx. 160kg		
	動力源 Power source	230V AC 0.5KVA		
	X線漏洩線量 Radiation method	1 μ Sv/h 以下 Less than 1 μ Sv/h		
	X線防護方式 Protection method	防X線特殊キャビネット X-ray-proof special cabinet		
	傾斜透視角 Range of X-ray image angle	0~50°	0°	
	透視拡大率 X-ray image magnification	10× more times (inverse proportion to pixels)		
	テーブル面積 Table area	330W × 440Dmm		
	テーブルストローク Table stroke	X Stroke	180mm	
		Y Stroke	180mm	

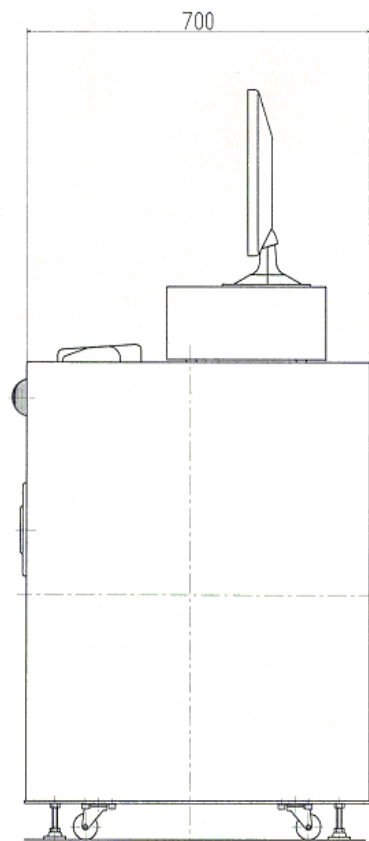
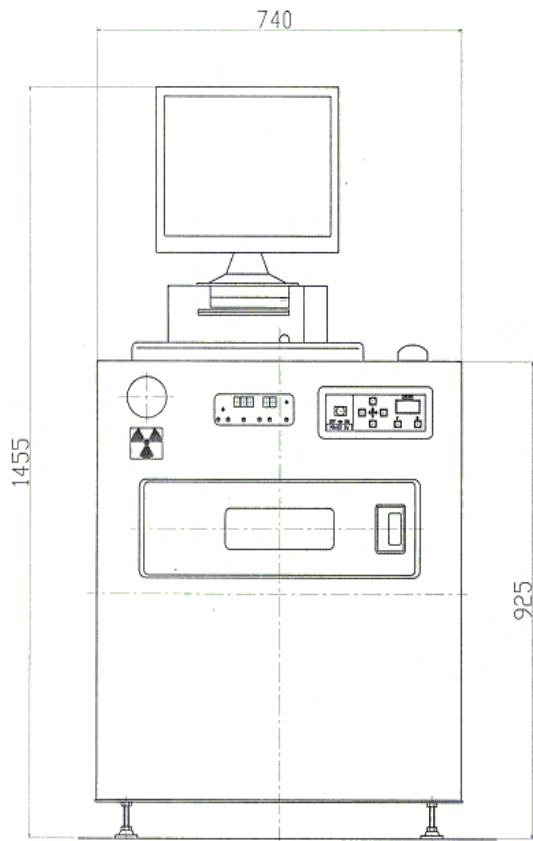
The specification are subject to change without notice.

3. MSX600 Over View

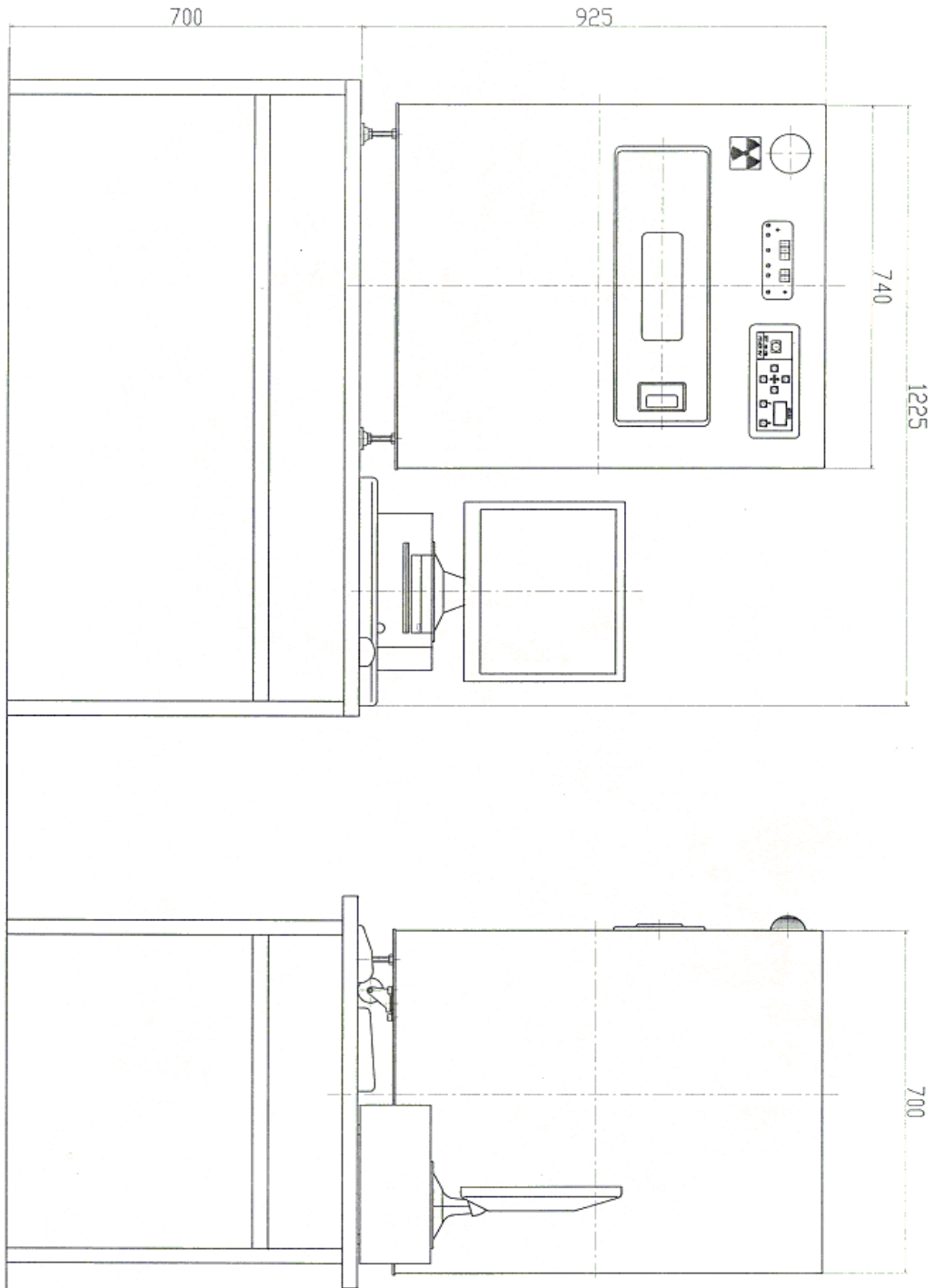
(1) On the floor



(2) On the floor



(3) On the Table



4. Description of the system

(1) X ray Generator

Type	By KINKI GX60-X ray Unit
Voltage (Max)	100Kv
Current (Max)	300 μ A
Out Put	27W
Focus Size	100 μ m
Focus Position	99.7mm from the unit
X ray Tube	Closed Type

(2) CMOS Camera

Type	XP-SZ-DD
<i>Input</i>	16V x 22H mm
CCD	2,300,000 pixel
Video Signal	Gig E Digital

(3) PC

Type	Techpal w10 L3.3
C P U	Intel Core i3-6100 (3.7GHz 2C/4T L3:3MB)
Memory	4GB DDR4 SDRAM
Strage	3.5" HDD 1TB SATA
O S	Windows 10 IoT EnterPrise 2019LTSC 32bit

(5) LED Display

Type	I/O DATA LCD-AD 172SEW
Display	TFT17
Resolution	1280 × 1024
Size	337.9 × 270.3 mm
Color	16770K

(6) Accessories:

- ① Instruction Manual
- ② X ray leakage Check list
- ③ Safty Operation Manual

5. Guarantee

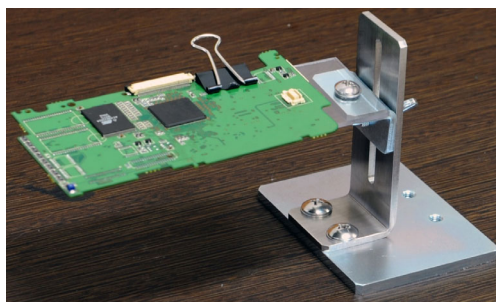
The parts of the system will be guarantee at no charge for one year from the delivery of the system. and or within life limit as following data.

Discription	Type	Guarantee Term
Main Parts	Dyne	3000 H
X Ray Tube	KINKI GX60 X ray unit	1000 H
X ray CMOS Camera	XP-SZ-DD	1000 H

Guarantee will be except following items:

- ① By operator error, unjust repair and unjust reconstruction on use.
- ② By movment, fall and shock after the system setting.
- ③ Any malfunction due to events beyond the control of the manufacturer (e..act of war)

Standard Accessorie:



The tool to rotate

- It is a tool into which an angle is easily adjustable
- If a samll board is installed, an angle is adjustable into freedom 360 ddegrees.